

P0#2B1058 LS802-B 说明书 (A0)

印色: 单黑 + Pantone 186 c

尺寸: 134*184 mm

材质: 128G铜版纸

(P0#2B0846 改:P4/P37)

TENSIOSCREEN



USER MANUAL | GUIDE D'UTILISATION

NL Handleiding | **IT** Manuale di istruzioni | **ES** Manual de instrucciones

DE Bedienungsanleitung | **PT** Manual de instruções

Terrailon®

www.terrailon.com

Made for / Compatibilité



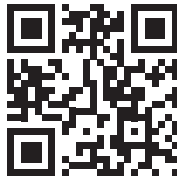
iPhone® 4S/5/5C/5S/6/6Plus
iPod® Touch 5th generation



iPad® 3/4/Air
iPad® Mini



Android 4.3
Bluetooth Smart 4.0 / Bluetooth Smart Ready



CE 0123



iPhone is registered trademark of Apple Inc.

Android is a trademark of Google Inc.

The Bluetooth® word mark and logos are registered trademarks
owned by Bluetooth SIG, Inc.

Other trademarks and trade names are those of their respective owners.

Tensioscreen

EN	TERRAILLON CONNECTED BLOOD PRESSURE MONITOR INSTRUCTION MANUAL	4
FR	TENSIOMÈTRE CONNECTÉE TERRAILLON NOTICE D'UTILISATION	8
NL	TERRAILLON BLOEDDRUKMETER HANDLEIDING	12
IT	SFIGMOMANOMETRO TERRAILLON MANUALE DI ISTRUZIONI	16
ES	TENSIÓMETRO TERRAILLON MANUAL DE INSTRUCCIONES	20
DE	BLUTDRUCKMESSGERÄT TERRAILLON BEDIENUNGSANLEITUNG	24
PT	MONITOR DE PRESSÃO SANGUINEA TERRAILLON MANUAL DE INSTRUÇÕES	28

Thank you very much for selecting the Terraillon Arm Blood Pressure Monitor TENSIOSCREEN.

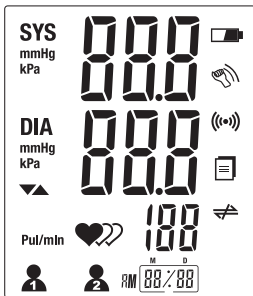
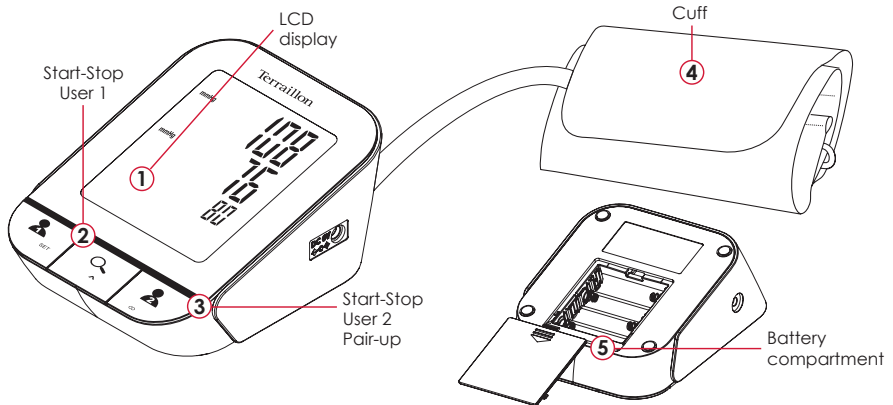


This unit allows you to monitor your blood pressure. This device is not intended to be a diagnostic device. Always contact your doctor for advice, diagnostic and treatment.

FIND MORE INFORMATION ON

<http://www.terraillon.com>

PRODUCT OVERVIEW



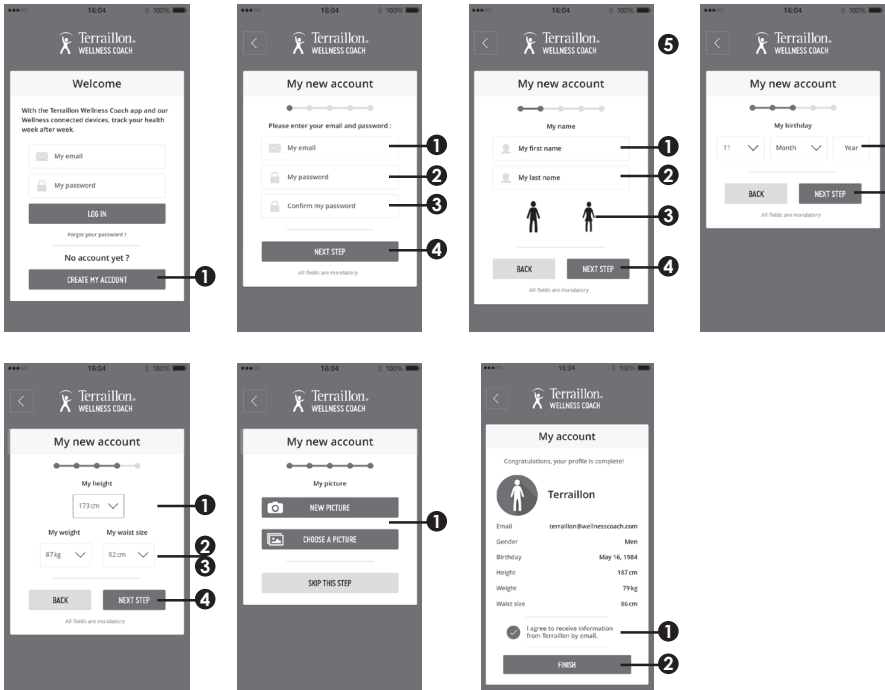
- SYS** Systolic Blood Pressure
- DIA** Diastolic Blood Pressure
- Pul/min** Pulse
- mmHg** Unit
- (☎)** Data transmitting
- (🔋)** Low Battery
- (📄)** Data pending to transmit
- ⌚** Time [Hour/Minute - Month/Day]
- ❤️** Irregular Heartbeat Detector

FIRST USE

- A** Insert the batteries (4 x AA) and press and hold User1 button to set time. Press button **Q** to change the numeral then press User1 button to confirm. After confirming [TIME] and [DATE], the LCD will display "Done".
- B** Download the Terraillon Wellness Coach application.

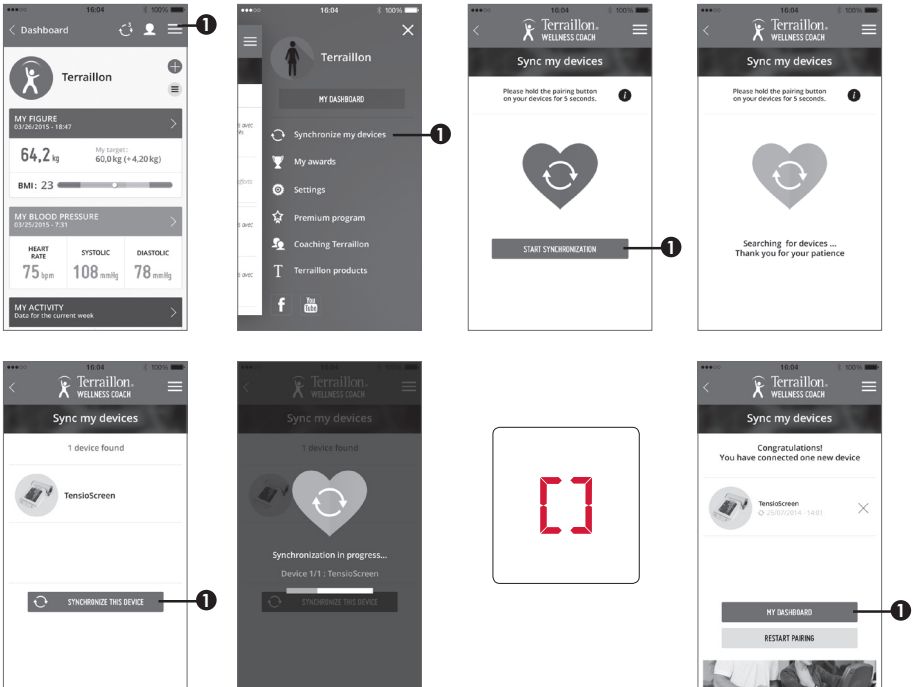


- C** Create your account.



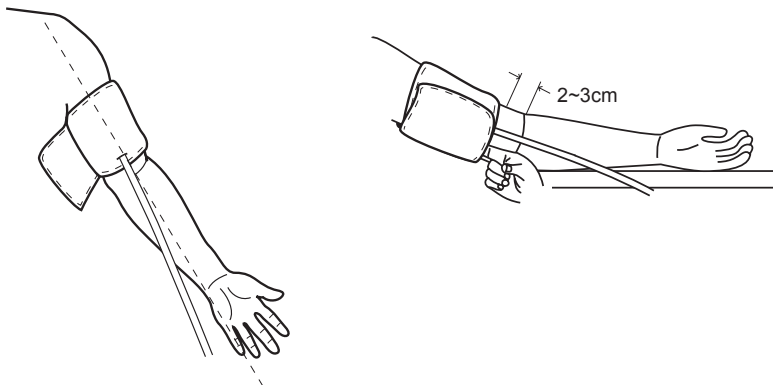
- D** Turn on Bluetooth on your Smartphone (Setting > Bluetooth > ON).
- E** Press and hold User2 button to start pair-up.

F





START MEASURING

- A** Tie the cuff
- B** Press User1 or User2 button to turn on the monitor, and it will complete the measurement process automatically



RECORDS

Press button  to access the memory. Press User1 or User2 to recall the measurement history of each user.

Press and hold button  for 3 seconds to clear the memory. When the LCD display "dEL ALL", press button  to confirm.

TIPS FOR MEASUREMENT

	Optimal	Normal	High-normal	Mild	Moderate	Severe
SYS	<120	120-129	130-139	140-159	160-179	≥180
DIA	<80	80-84	85-89	90-99	100-109	≥110

* The blood pressure classification published by World Health Organization (WHO) and International Society of Hypertension (ISH).

TROUBLESHOOTING

- E2** The cuff is very tight.
- E3** The pressure of the cuff is excess.
- E9** Product has not been activated.
- E10/11** The monitor detected motion while measuring.
- E20** Measurement process does not detect the pulse signal.
- E21** Measure incorrectly.
- Eexx** A calibration error occurred.
- Lo** Low Battery. Replace all four batteries in the same time.

WARRANTY & ENVIRONMENT PROTECTION

This product is guaranteed for 2 years against material and manufacturing defects. During this period, such defects will be repaired free of charge (proof of purchase must be presented if the scale is under warranty). This warranty does not cover damage resulting from accidents, improper use or negligence. If you have a complaint please contact the store where you purchased the product first.



Waste electrical products should not be disposed of with household waste. Please recycle where facilities exist. Check with your local authority or retailer for recycling advice.

Nous vous remercions d'avoir choisi le tensiomètre bras TENSIOSCREEN de Terraillon.

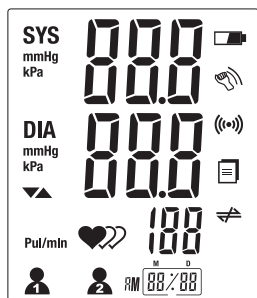
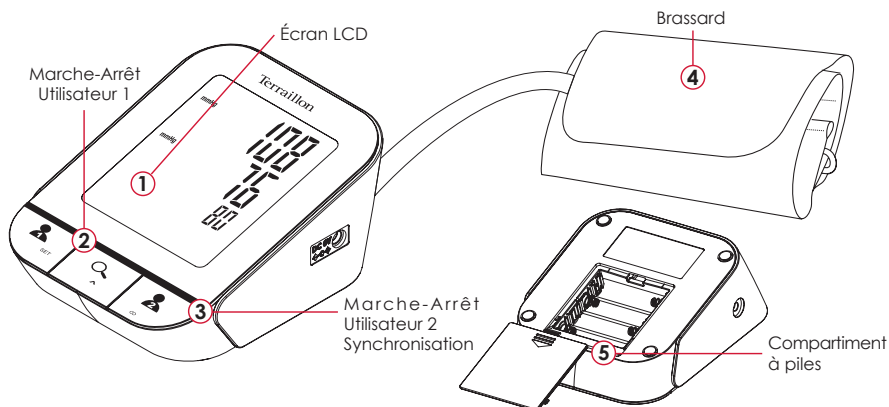


Cet appareil vous permet de contrôler votre tension artérielle. Il n'a pas vocation à être un dispositif de diagnostic. Contactez toujours votre médecin pour obtenir tout conseil, diagnostic ou traitement.

BESOIN D'INFORMATION ?

<http://www.terraillon.com>

APERÇU DU PRODUIT



- SYS** Pression artérielle systolique
- DIA** Pression artérielle diastolique
- Pul/min** Pouls
- mmHg** Unité
- (☎)** Données en cours de transmission
- 🔋** Batterie faible
- 📄** Données en attente de transmission
- 📅** Heure [Heure/Minute - Mois/Jour]
- 🫀** Détecteur de rythme cardiaque irrégulier

PREMIÈRE UTILISATION

- A** Insérez les piles (4 x AA) et maintenez enfoncée Utilisateur1 pour accéder au réglage de l'heure. Appuyez sur Q pour modifier le chiffre puis cliquez sur le bouton Utilisateur1 pour confirmer. Après avoir confirmé [HEURE] et [DATE], l'écran LCD affichera « Done ».
- B** Téléchargez l'application Terraillon Wellness Coach.

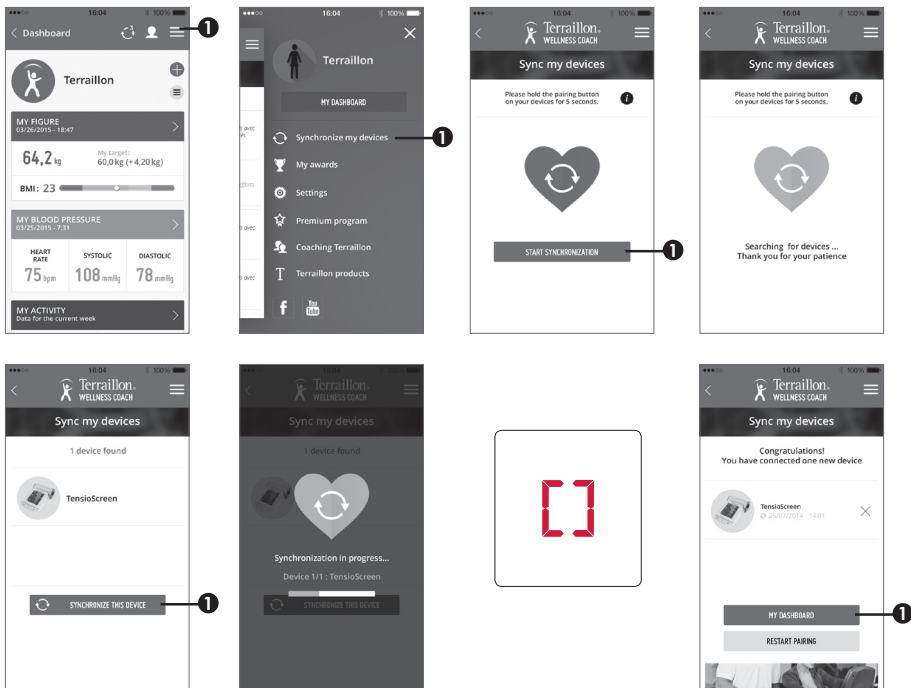


- C** Créez votre compte sur l'application.



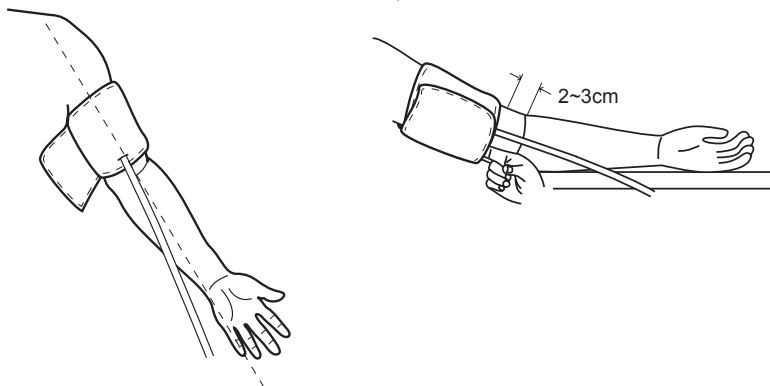
- D** Activez la fonction Bluetooth sur votre Smartphone (Réglages > Bluetooth > ON).
- E** Appuyez sur le bouton Utilisateur2 et maintenez-le appuyé pour démarrer la synchronisation.

F



COMMENCER LES MESURES

- A** Attachez le brassard.
- B** Appuyez sur Utilisateur1 ou Utilisateur2 pour activer l'appareil. Votre prise de tension se fera de manière automatique.



MÉMOIRES

Appuyez sur le bouton **Q** pour accéder à la mémoire. Appuyez sur le bouton Utilisateur1 ou Utilisateur2 pour faire défiler l'historique de chaque utilisateur.

En mode rappel de mémoire, appuyez sur le bouton **Q** et maintenez-le enfoncé pendant 3 secondes pour effacer les enregistrements. Lorsque l'écran affiche "dEL ALL", appuyez sur **Q** pour confirmer

INDICATIONS POUR LA MESURE

	Optimal	Normal	Normal à élevé	Moyen	Modéré	Sévère
SYS	<120	120-129	130-139	140-159	160-179	≥180
DIA	<80	80-84	85-89	90-99	100-109	≥110

* Classification de la tension artérielle par l'Organisation Mondiale de la Santé (OMS) et la Société Internationale d'Hypertension (ISH).

DIAGNOSTIC

- E2** Le brassard est très serré.
- E3** La pression du bracelet est trop forte.
- E9** Le produit n'a pas été activé.
- E10/11** L'appareil a détecté un mouvement pendant la mesure.
- E20** Aucun signal de pouls n'a été détecté.
- E21** Mesure incorrecte.
- Eexx** Une erreur d'étalonnage s'est produite.
- Lo** Piles faibles. Remplacer les quatre piles en même temps.

GARANTIE ET PROTECTION DE L'ENVIRONNEMENT

Cet appareil est garanti 2 ans contre tout défaut matériel et de fabrication. Au cours de cette période, ces défauts seront réparés gratuitement (une preuve d'achat doit être présentée si la balance est sous garantie). Cette garantie ne couvre pas les dommages provenant d'accidents, d'une mauvaise utilisation ou de négligence. Si vous avez une réclamation, adressez-vous d'abord au magasin où vous avez acheté votre produit.



Les déchets de produits électriques ne doivent pas être jetés avec les ordures ménagères. Les recycler dans les installations prévues à cet effet. Contacter l'administration locale ou le détaillant pour tout conseil de recyclage.

Bedankt om voor de Bloeddrukmeter TENSIOSCREEN van TERRAILLON te kiezen.

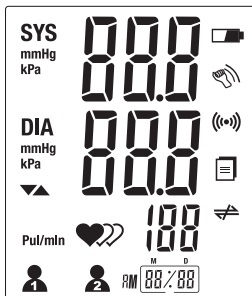
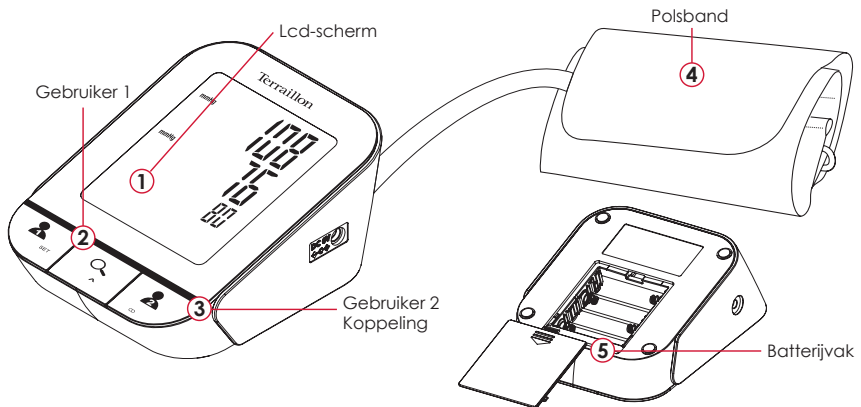


Met deze unit kunt u uw bloeddruk meten. Het apparaat is niet bedoeld om een diagnose te stellen. Wend u steeds tot uw arts voor advies, diagnose en behandeling.

MEER INFORMATIE OVER

<http://www.terraillon.com>

OVERZICHT



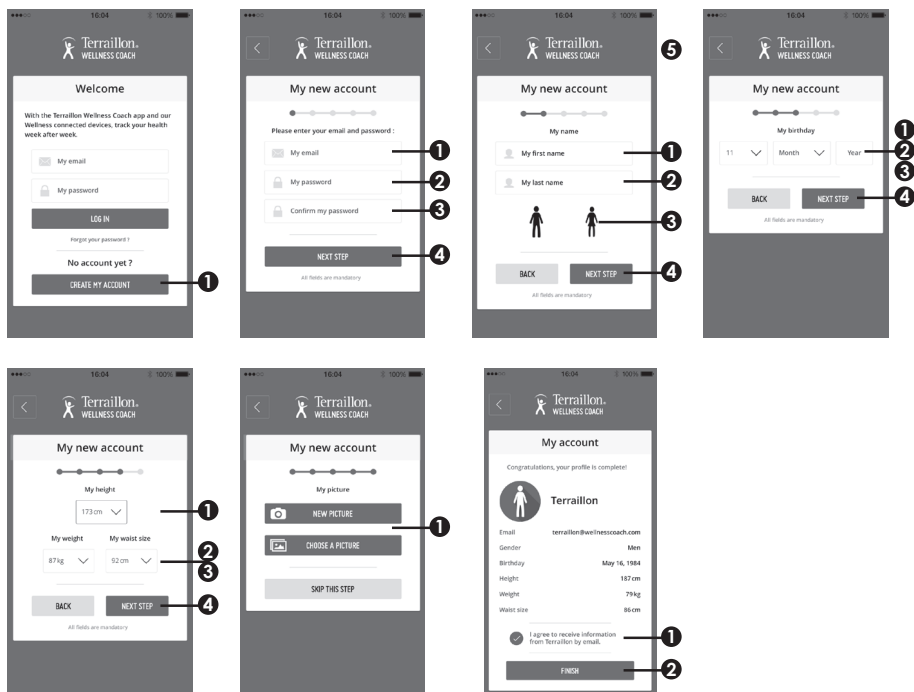
- SYS** Systolische bloeddruk
- DIA** Diastolische bloeddruk
- Pul/min** Hartslag
- mmHg Unit
- ())) Gegevens worden overgedragen
- ()) Batterij bijna leeg
- ()) Gegevens wachtend op overdracht
- ())) Tijd [Uur/Minuut - Maand/Dag]
- ())) Detector onregelmatige hartslag

EEERSTE INSTALLATIE

- A** Plaats de batterijen (4xAA) en Houd de User1-toets 3 seconden ingedrukt om naar de tijdinstelmodus te gaan. Druk op **Q** om het cijfer te wijzigen en druk opnieuw op User1 om het te bevestigen. Nadat u [JUR] en [DATUM] hebt bevestigd, verschijnt de vermelding “Done” op het lcd-scherm schakelt.
- B** Download de Terraillon Wellness Coach-app.

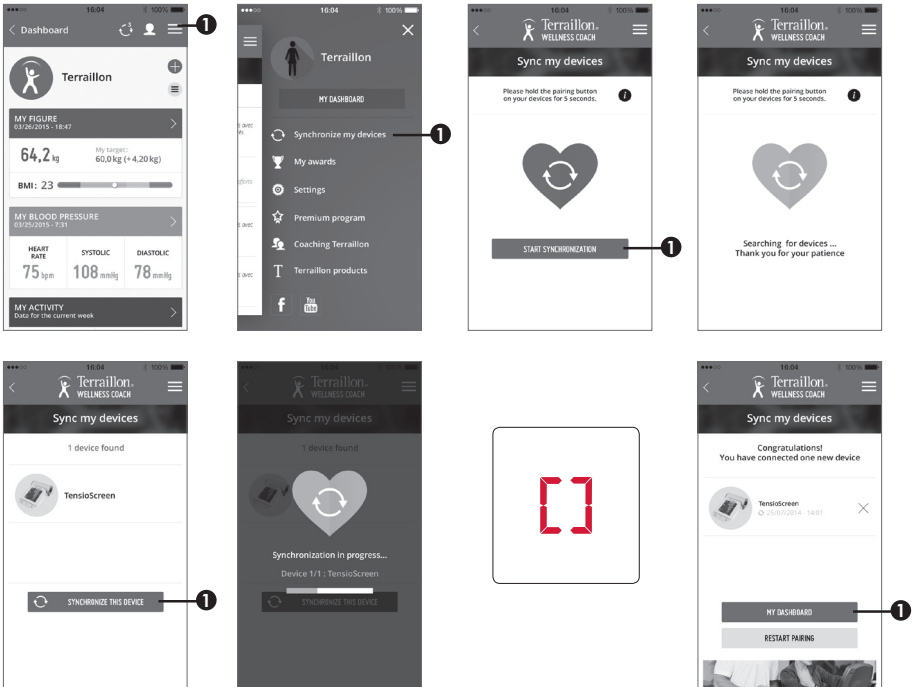


- C** Maak een account aan.



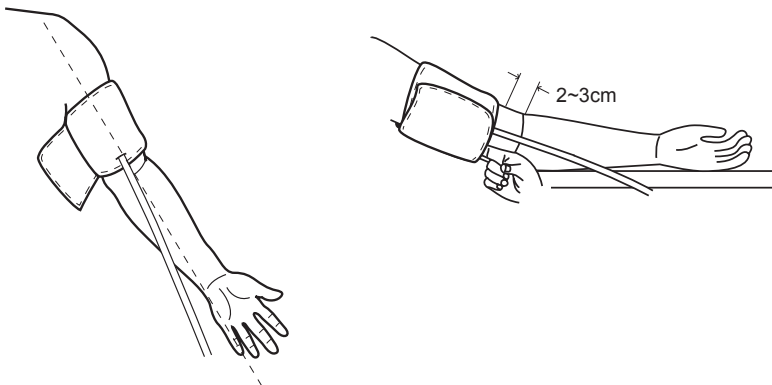
- D** Schakel de Bluetooth-functie van uw smartphone in (Instellingen > Bluetooth > AAN).
- E** Houd de “Gebruiker 2”-toets om de koppeling te starten.

F






BEGINNEN MET METEN

- A** De polsband bevestigen.
- B** Drukt u op "Gebruiker 1/2"-toets om de meter in te schakelen. Deze zal het meetproces automatisch voltooien.



GEGEVENS

Druck op  om toegang te krijgen tot het geheugen. Druk op Gebruiker 1 of Gebruiker 2 om de opgeslagen gegevens te doorbladeren.

Houd in de oproepmodus de  toets 3 seconden ingedrukt om Gegevens te wissen. "dEL ALL" verschijnt op het lcd-scherm, druk opnieuw op  om het te bevestigen.

MEETTIPS



	Optimaal	Normaal	Hoog- normaal	Licht	Matig	Ernstig
SYS	<120	120-129	130-139	140-159	160-179	≥180
DIA	<80	80-84	85-89	90-99	100-109	≥110

PROBLEMEN OPLOSSEN

- E2** De polsband is heel strak
- E3** De druk van de polsband is te hoog
- E9** Het product is niet geactiveerd
- E10/11** De meter detecteerde beweging tijdens het meten
- E20** Het meetproces detecteert geen hartslagsignaal
- E21** Onjuiste meting
- Eexx** Er is een ijkingfout opgetreden
- Lo** Batterij bijna leeg. Vervang alle vier batterijen tegelijkertijd.

GARANTIE & BESCHERMING VAN HET LEEFMILIEU

Voor dit toestel geldt een garantie van 2 jaar tegen materiaal- en fabricagefouten. Gedurende deze periode zullen dergelijke defecten gratis gerepareerd worden (tijdens de garantieperiode moet een bewijs van aankoop worden overgelegd). Schade veroorzaakt door ongevallen, onjuist gebruik of nalatigheid valt niet onder de garantie. Als u klachten hebt, dient u zich in eerste instantie te wenden tot de winkel waar u de monitor heeft gekocht.

-  Afgedankte elektrische producten horen niet bij het huishoudelijk afval. Gelieve te recyclen waar mogelijk. Raadpleeg uw lokale overheid of  verkoper voor recyclingadvies.

Grazie per aver scelto TENSIOSCREEN il monitor per la misurazione della pressione sanguigna TERRAILLON.

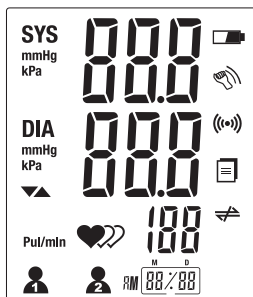
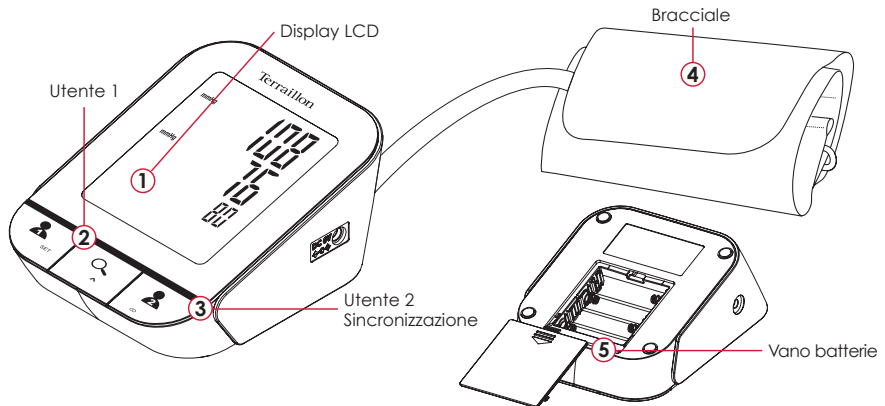


L'unità permette di monitorare la pressione del sangue. Il dispositivo non è pensato come apparecchio di diagnosi. Contattare sempre il proprio medico per consigli, diagnosi e terapia.

TROVATE MAGGIORI INFORMAZIONI SUL


<http://www.terraillon.com>

IN SINTESI



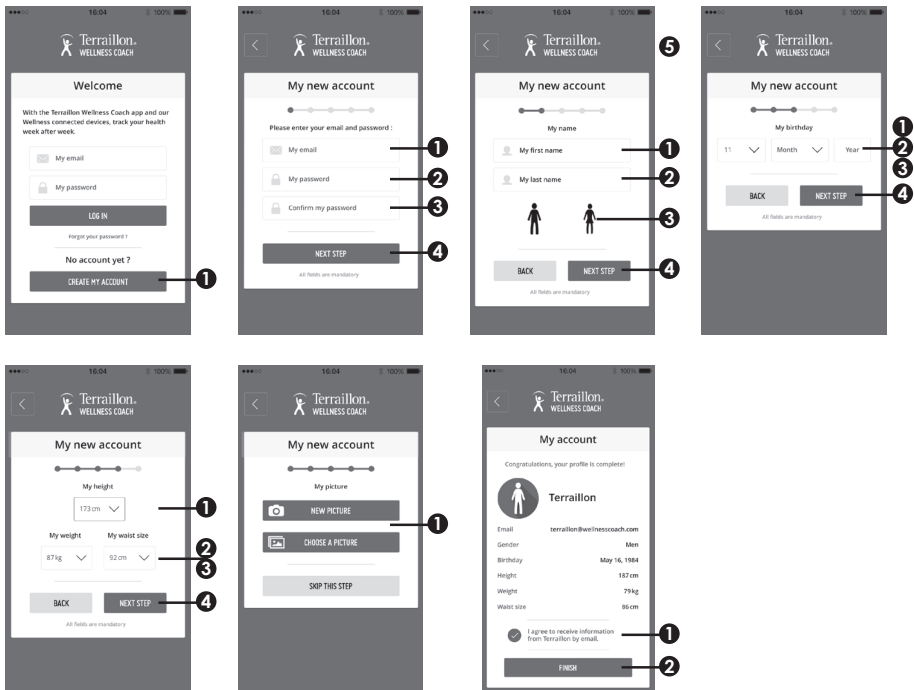
- SYS** Pressione arteriosa sistolica
- DIA** Pressione arteriosa diastolica
- Pul/min** Pulsazioni
- mmHg** Unità
- (☎)** Trasmissione dati
- 🔋** Batteria scarica
- 📄** Dati da trasmettere
- 📅** Data/ora [Ore/Minuti - Mese/Giorno]
- 🫀** Rilevatore battito cardiaco irregolare

PRIMA INSTALLAZIONE

- A** Inserire le batterie (4xAA) e mantenere premuto il tasto User1 per 3 secondi per entrare nella modalità impostazione data/ora. Premere il tasto  per modificare il numero e premere nuovamente il tasto Utente 1 per confermare. Dopo aver confermato [ORA] e [DATA], il display LCD mostra "Done".
- B** Scaricare l'app Terraillon Wellness Coach.

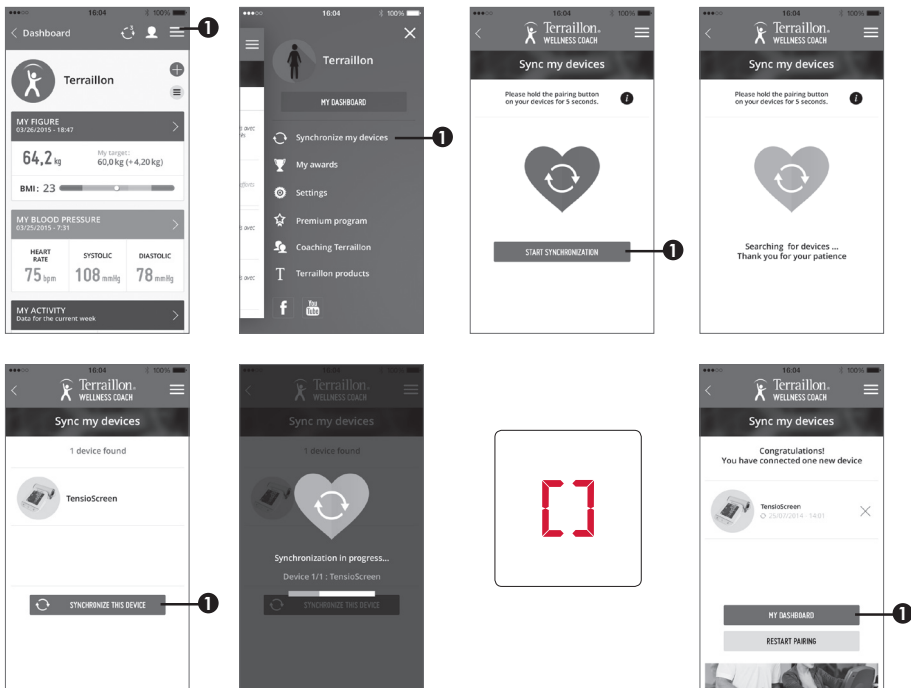


- C** Creare un account.



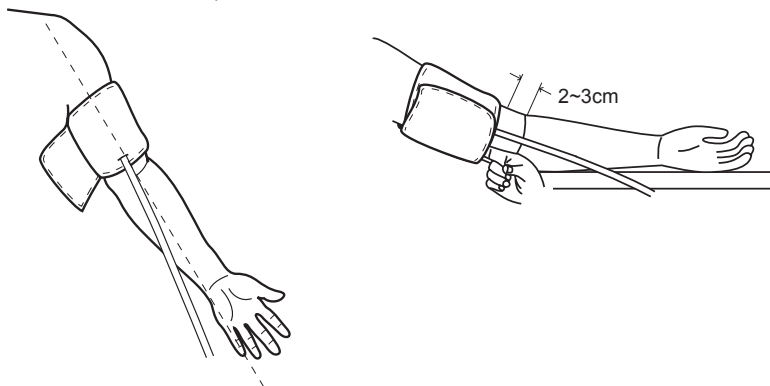
- D** Attivare la funzione Bluetooth sullo Smartphone (Impostazioni > Bluetooth > ON).
- E** Tenere premuto il tasto "Utente 2" per avviare l'accoppiamento.

F



AVVIARE LE MISURAZIONI

- A** Fissaggio del bracciale.
- B** Premere "Utente1"/"Utente2" per accendere il monitor che completerà automaticamente la procedura di misurazione.



REGISTRAZIONI

Premere il tasto  per accedere alla memoria. Premere il tasto Utente1 oppure Utente2 per modificare la disposizione delle registrazioni della cronologia.

In modalità di accesso memoria, tenere premuti contemporaneamente per 3 secondi il tasto  per l'eliminazione delle registrazioni. Lo schermo LCD mostrerà il messaggio "dEL ALL", premere nuovamente il tasto  per confermare.

SUGGERIMENTI PER LA MISURAZIONE

	Ottimale	Normale	Alto-normale	Lieve	Moderato	Grave
SYS	<120	120-129	130-139	140-159	160-179	≥180
DIA	<80	80-84	85-89	90-99	100-109	≥110

RISOLUZIONE DEI PROBLEMI

- E2** Il bracciale è molto stretto.
- E3** La pressione del bracciale è.
- E9** Il prodotto non è stato attivato.
- E10/11** Il monitor ha rilevato un movimento durante la misurazione.
- E20** La procedura di misurazione non rileva il segnale del polso.
- E21** Misurazione incorretta.
- Eexx** Si è verificato un errore di calibrazione.
- Lo** Batteria scarica.

GARANZIA & PROTEZIONE DELL'AMBIENTE

Questo prodotto è garantito per 2 anni contro difetti di materiale e di fabbricazione. Durante questo periodo, tali difetti saranno riparati gratuitamente (presentare la prova di acquisto se la bilancia è sotto garanzia). Questa garanzia non copre i danni derivanti da incidenti, uso improprio o negligenza. In caso di reclamo contattare il negozio presso cui è stata acquistata il monitor.



I rifiuti di apparecchiature elettriche non devono essere smaltiti come rifiuti domestici. Riciclare dove esistono strutture atte allo scopo. Consultare le autorità locali o il rivenditore per indicazioni riguardanti il riciclaggio.

Muchas gracias por haber elegido el tensiómetro TENSIOSCREEN de TERRAILLON.

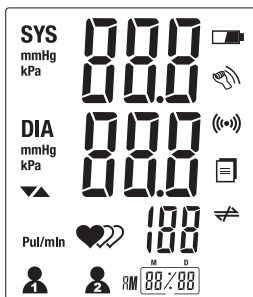
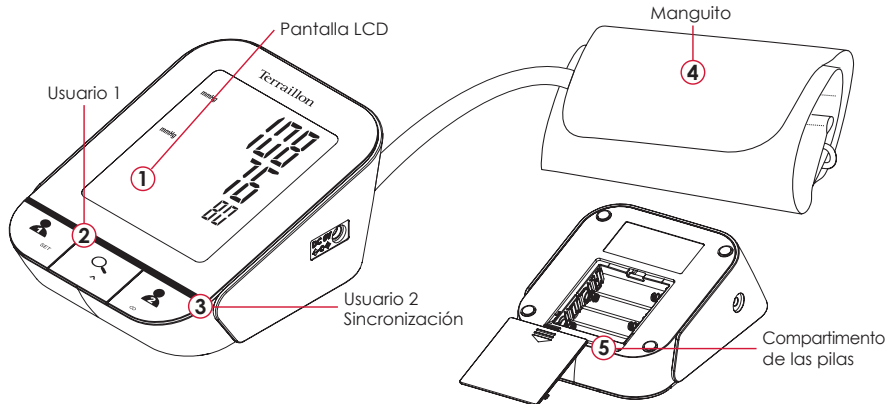


Esta unidad le permite controlar su tensión arterial. Este dispositivo no ha sido diseñado como dispositivo de diagnóstico. Para recibir asesoramiento, diagnóstico y tratamiento, consulte siempre a su médico.

ENCONTRAR MÁS INFORMACIÓN SOBRE


<http://www.terraillon.com>

DESCRIPCIÓN GENERAL



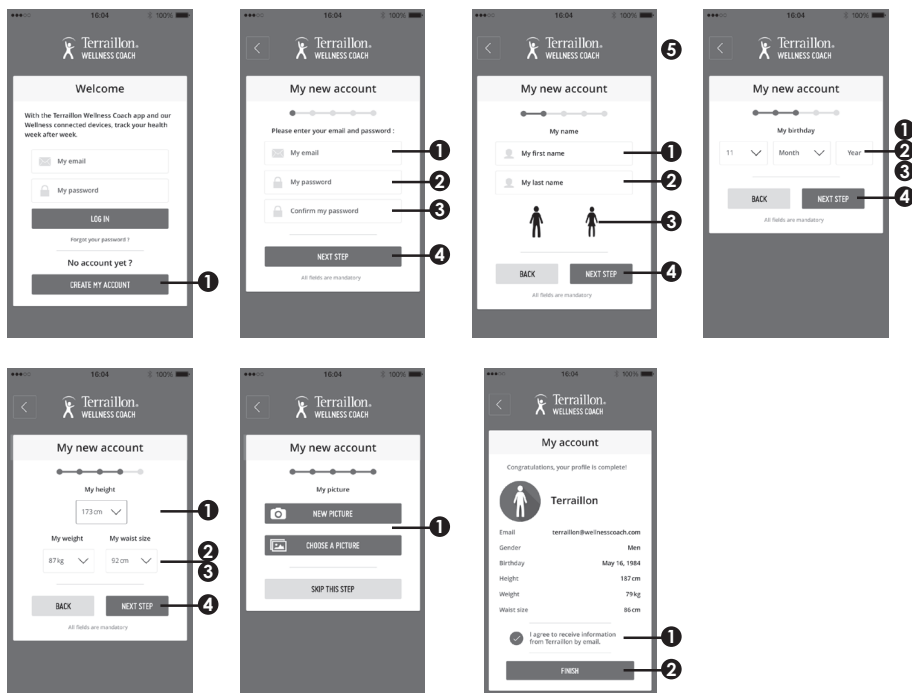
- SYS** Tensión arterial sistólica
- DIA** Tensión arterial diastólica
- Pul/min** Pulso
- mmHg** Unidad
- (☎)** Transmisión de datos
- (🔋)** Batería baja
- (📄)** Datos pendientes de transmisión
- 🕒** Hora [Hora / minuto - Mes / día]
- 🫀** Detector de latidos irregulares

INSTALACIÓN INICIAL

- A** Introduzca las pilas y mantenga pulsado el botón User1 durante 3 segundos para entrar en el modo de ajuste de hora. Pulse el botón  para cambiar el número y vuelva a pulsar el botón Usuario 1 para confirmar. Una vez confirmados los [TIEMPO] y el [FECHA], en la pantalla LCD aparecerá el mensaje «Done».
- B** Descargue la aplicación Terraillon Wellness Coach.

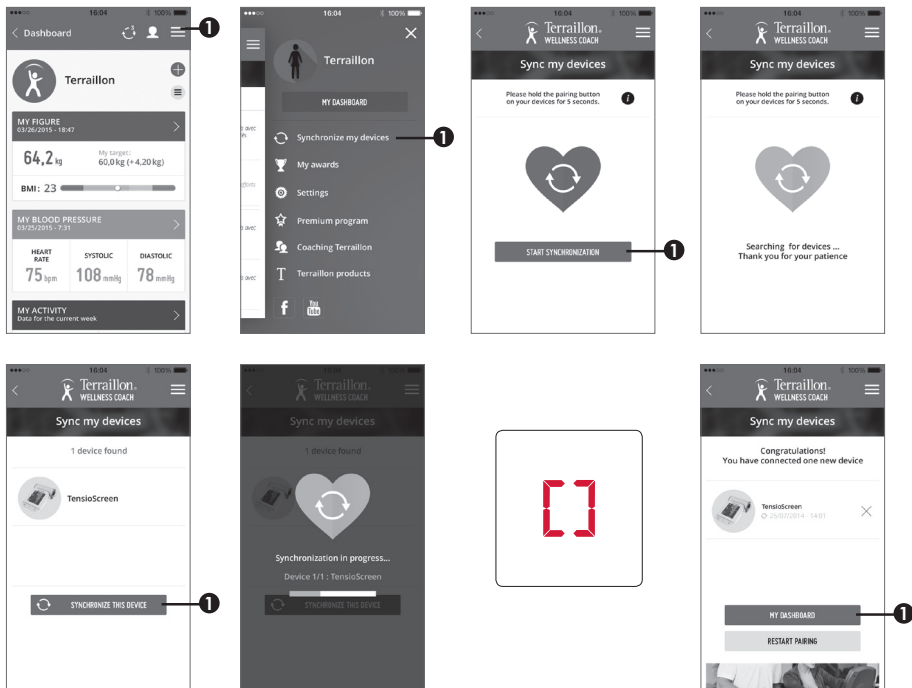


- C** Cree una cuenta.



- D** Active la función Bluetooth en su smartphone (Ajustes > Bluetooth > ACTIVADO).
- E** Mantenga pulsado el botón “Usuario 2” para iniciar el emparejamiento.

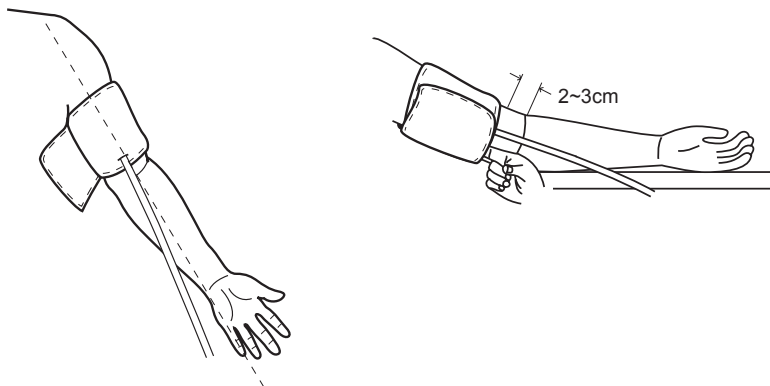
F



COMENZAR A MEDIR



A Fijación del manguito.

B Pulse "Usuario1"/ "Usuario2" para encender el tensiómetro y este realizará el proceso de medición de forma automática.



REGISTROS

Pulse el botón  para acceder a la memoria. Pulse el botón Usuario 1 o Usuario 2 para moverse por los registros del historia.

En el modo de consulta de memoria, mantenga pulsados el botón  durante 3 segundos para el eliminación de registros. La pantalla LCD mostrará el mensaje «dEL All», vuelva a pulsar el botón  para confirmar.

CONSEJOS PARA REALIZAR MEDICIONES

	Óptima	Normal	Normal-alta	Leve	Moderada	Grave
SYS	<120	120-129	130-139	140-159	160-179	≥180
DIA	<80	80-84	85-89	90-99	100-109	≥110

SOLUCIÓN DE PROBLEMAS

- E2** El manguito está muy apretado.
- E3** La tensión del manguito es excesiva.
- E9** El producto no se ha activado.
- E10/11** El tensiómetro ha detectado movimiento durante la medición.
- E20** El proceso de medición no detecta la señal de pulso.
- E21** Medición incorrecta.
- Eexx** Error de calibración.
- Lo** Batería baja. Cambie las cuatro pilas al mismo tiempo.

GARANTÍA & PROTECCIÓN MEDIOAMBIENTAL

El producto está garantizado por un período de dos años contra todo defecto de material y de fabricación. Durante dicho período, los problemas de este tipo se repararán gratuitamente, previa presentación de un justificante de compra. La garantía no cubre los daños resultantes de accidentes, uso indebido o negligencia. Si tiene una reclamación, le rogamos se ponga en contacto, en primer lugar, con la tienda en la que adquirió el producto.



Los productos eléctricos no deben desecharse con la basura doméstica. Recíclelos en las instalaciones disponibles. Consulte a las autoridades locales o al comerciante para informarse sobre el reciclado.

Vielen Dank, dass Sie sich für ein TERRAILLON Blutdruckmessgerät TENSIOSCREEN entschieden haben.

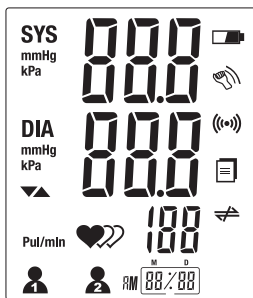
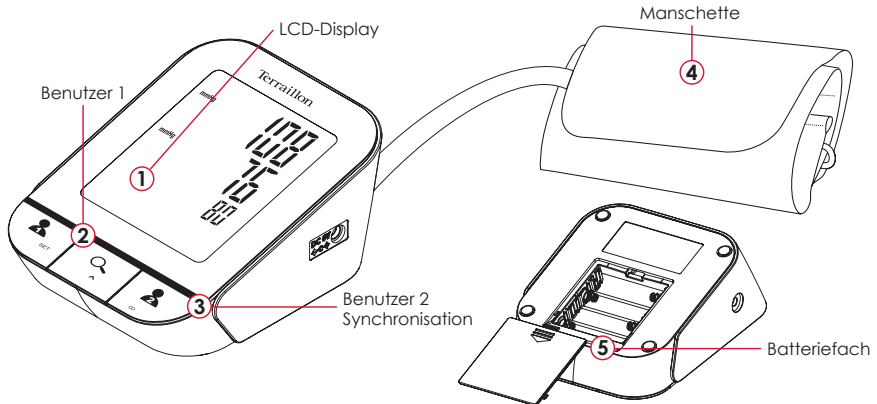


Dieses Gerät ermöglicht Ihnen die Kontrolle Ihres Blutdrucks. Es ist nicht für diagnostische Zwecke bestimmt. Für Diagnose, Rat und Behandlung sollten Sie stets Ihren Arzt aufsuchen.

MEHR INFORMATIONEN FINDEN SIE


<http://www.terraillon.com>

FUNKTIONEN



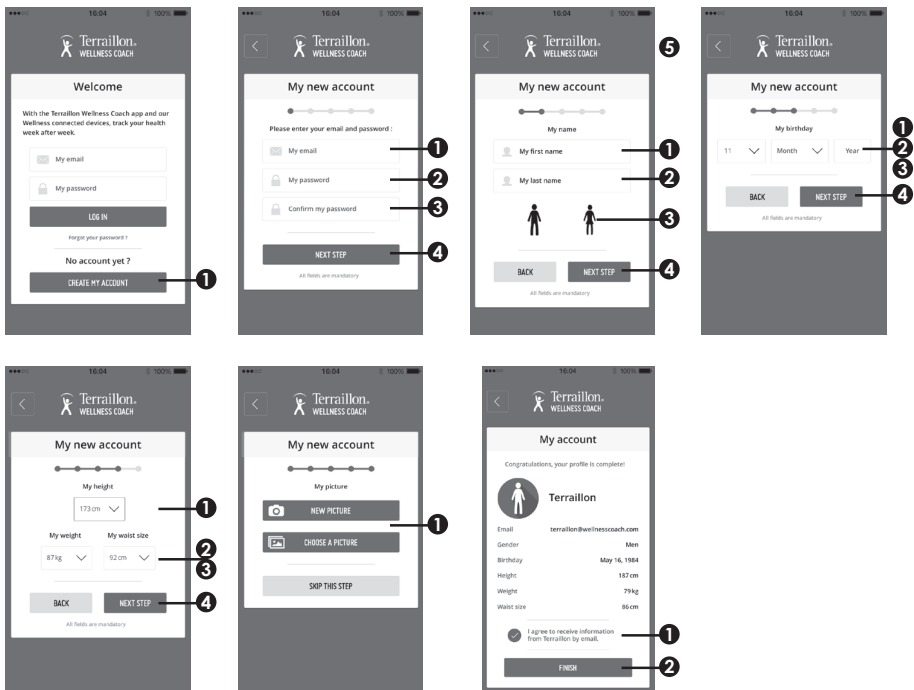
- SYS** Systolischer Blutdruck
- DIA** Diastolischer Blutdruck
- Pul/min** Puls frequenz
- mmHg Gerät
- ((())) Datenübertragung
- 🔋 Batterie schwach
- 📄 Zur Übertragung anhängige Daten
- 🕒 Zeit [Stunde/Minute - Monat/Tag]
- 👤 Melder für unregelmäßigen Herzschlag

ERSTINSTALLATION

- A** Legen Sie die Batterien (4 x AA) und halten Sie die User1-Taste 3 Sekunden lang gedrückt, um den Zeiteinstellungsmodus aufzurufen. Drücken Sie die Taste  um die Zahl zu ändern und Drücken Sie erneut Benutzer 1, um die Zahl zu bestätigen. Nachdem Sie [ZEIT] und [DATUM] bestätigt haben, erscheint die Meldung „Done“ auf dem Display.
- B** Laden Sie die App Terraillon Wellness Coach herunter.

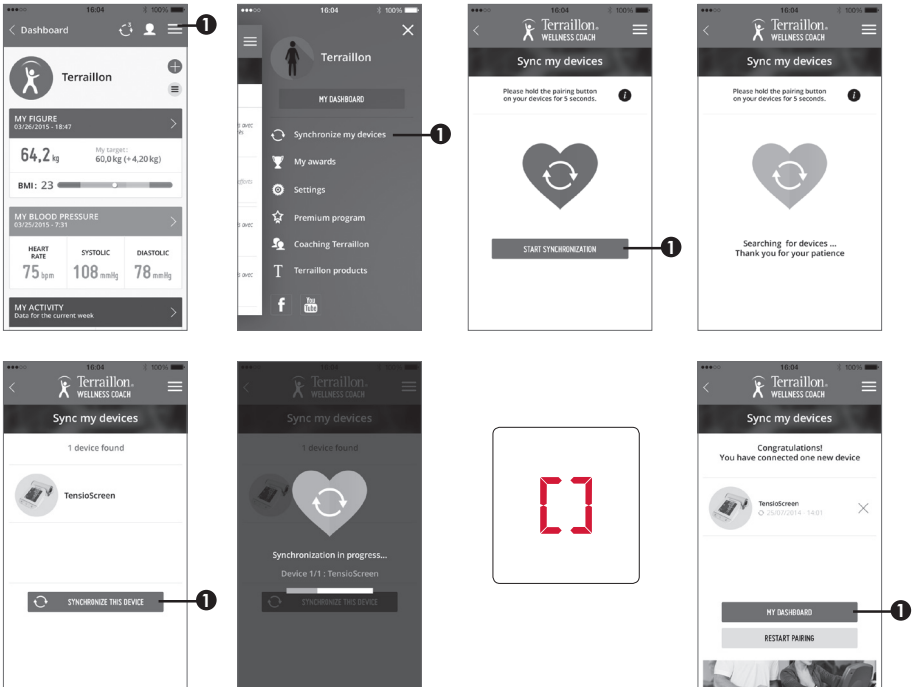


- C** Legen Sie ein Konto an.



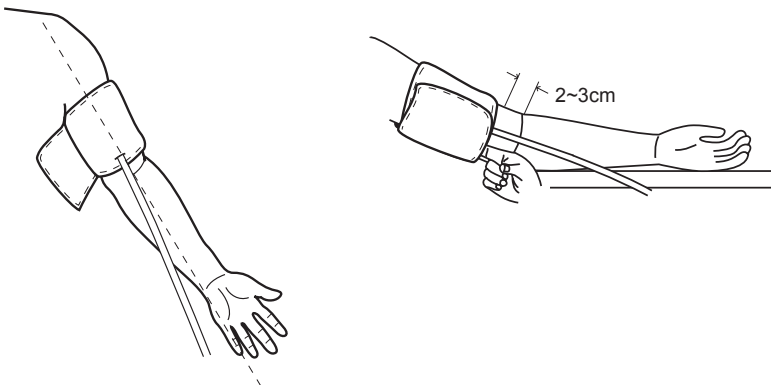
- D** Aktivieren Sie die Bluetooth-Funktion auf Ihrem Smartphone (Einstellungen > Bluetooth > ON).
- E** Halten Sie die “Benutzer 2”-Taste um das Koppeln zu aktivieren.

F



ERSTE MESSUNGEN

- A** Anbringen der Manschette.
- B** Drücken Sie "Benutzer1"/ "Benutzer2"--Taste, um das Gerät einzuschalten. Dann erfolgt die Messung automatisch.



DATEN

Drücken Sie **Q**, um auf den Speicher zuzugreifen. Drücken Sie Benutzer 1 oder Benutzer 2, um die gespeicherten Ergebnisse einzusehen.

Halten Sie im Speicher-Aufruf-Modus gleichzeitig die Taste **Q** 3 Sekunden lang gedrückt, um die Daten zu löschen. Erscheint „DEL ALL“ im Display, drücken Sie erneut **Q**, um zu bestätigen.

TIPPS ZUR MESSUNG DES BLUTDRUCKS

	Optimal	Normal	Hoch-normal	Leichte Hypertonie	Mittlere Hypertonie	Schwere Hypertonie
SYS	<120	120-129	130-139	140-159	160-179	≥180
DIA	<80	80-84	85-89	90-99	100-109	≥110

PROBLEMLÖSUNG

- E2** Die Manschette ist sehr eng.
- E3** Die Manschette ist zu stark aufgepumpt.
- E9** Das Gerät wurde nicht aktiviert.
- E10/11** Das Gerät hat während der Messung eine Bewegung erkannt.
- E20** Während der Messung wurde kein Pulssignal erfasst.
- E21** Falsche Messung.
- Eexx** Ein Kalibrationsfehler ist aufgetreten.
- Lo** Schwache Batterie. Alle vier Batterien gleichzeitig ersetzen.

GARANTIE & UMWELTSCHUTZSYMBOL

Für dieses Produkt besteht eine 2-Jahres-Garantie gegen Material- und Fabrikationsfehler. Während dieses Zeitraums werden diese Fehler kostenlos repariert (wenn die Waage unter Garantie steht, muss ein Kaufnachweis vorgelegt werden). Diese Garantie deckt keine Schäden, die aus Unfällen, unsachgemäßer Verwendung oder Nachlässigkeit entstehen. Bei Reklamationen wenden Sie sich bitte an das Geschäft, in dem Sie die Blutdruckmessgerät erworben haben.



Elektrische Geräte getrennt von Hausmüll entsorgen. Bitte nach Möglichkeit recyceln. Erkundigen Sie sich bei Ihrem Händler oder Ihrer Gemeinde nach Recyclingmöglichkeiten.

Muito obrigado por escolher TENSIOSCREEN o Monitor de Pressão Sanguínea TERRAILLON.

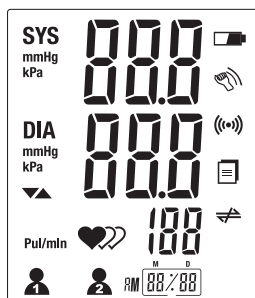
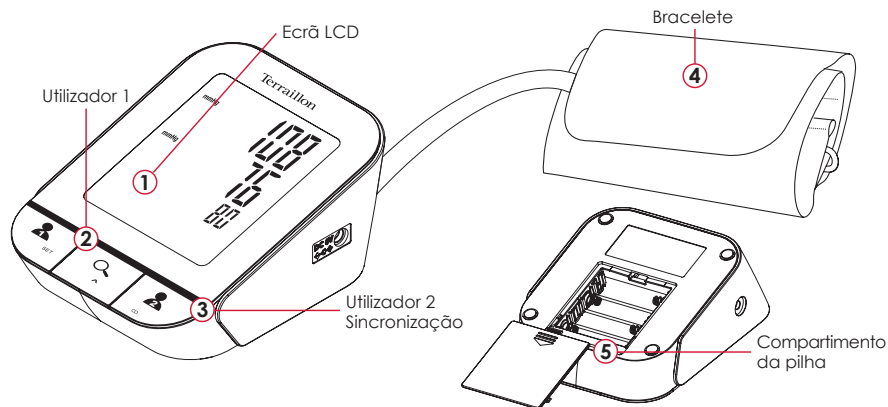


Esta unidade permite-lhe controlar a sua pressão sanguínea. Este dispositivo não se destina a ser utilizado como dispositivo de diagnóstico. Contacte sempre o seu médico relativamente a diagnósticos, aconselhamento e tratamento.

OBTENHA MAIS INFORMAÇÕES SOBRE

<http://www.terraillon.com>

VISÃO GERAL



- SYS** Pressão Sanguínea Sistólica
- DIA** Pressão Sanguínea Diastólica
- Pul/min** Batimentos cardíacos
- mmHg Unidade
- ☎ Dados em transmissão
- 🔋 Pilha Fraca
- 📄 Dados aguardam transmissão
- 🕒 Tempo [Hora/Minuto - Mês/Dia]
- 👤 Detetor de batimentos cardíacos irregulares

PRIMEIRA INSTALAÇÃO

- A** Insira as pilhas e prima e mantenha premido o botão User1 durante 3 segundos, para entrar no Modo de Definição do Tempo. Prima o botão Q para alterar o número e prima novamente o botão Utilizador 1 para confirmar. Depois de confirmar os [HORA] e [DATA], o LCD apresenta a mensagem "Done".
- B** Descarregue a aplicação Terraillon Wellness Coach.

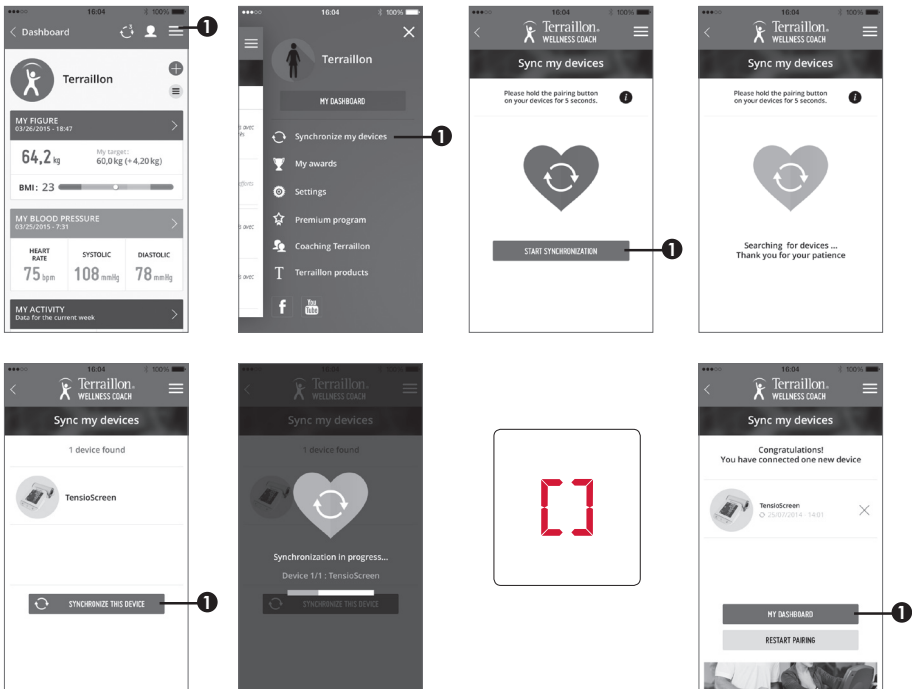


- C** Crie uma conta.



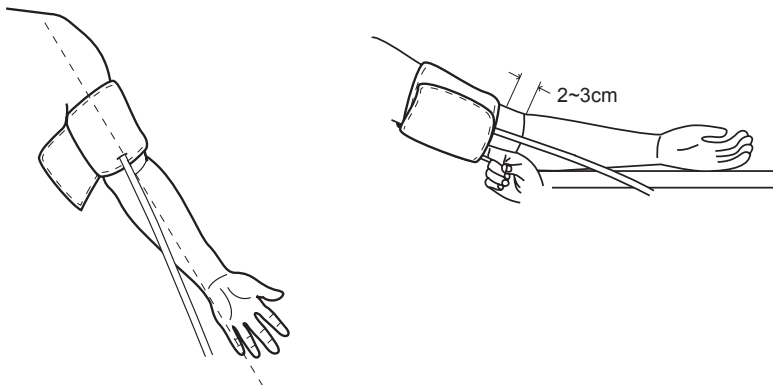
- D** Active a função Bluetooth no Smartphone (Definições > Bluetooth > Ligado).
- E** Mantenha premido o botão "Utilizador 2" para iniciar a sincronização.

F




COMEÇAR A UTILIZAÇÃO

- A** Coloque a bracelete.
- B** Prima "Utilizador 1/Utilizador 2" para ativar o monitor. Este completará o procedimento de medição automaticamente.



REGISTOS

Prima o botão  para aceder à memória. Prima o botão Utilizador 1 ou Utilizador 2 para avançar ou retroceder nos registos.

Prima o botão  No Modo de Chamada de Memória, prima e mantenha premido o botão durante 3 segundos para eliminar Registos. O LCD apresenta a informação "dEL ALL", prima novamente o botão  para confirmar

SUGESTÕES DE MEDIÇÃO

	Ótimo	Normal	Elevada-normal	Ligeira	Moderato	Grave
SYS	<120	120-129	130-139	140-159	160-179	≥180
DIA	<80	80-84	85-89	90-99	100-109	≥110

RESOLUÇÃO DE PROBLEMAS

- E2** A bracelete está demasiado apertada.
- E3** A pressão na bracelete é exagerada.
- E9** O produto não foi ativado.
- E10/11** O monitor detetou movimento durante a medição.
- E20** O processo de medição não deteta batimentos cardíacos.
- E21** Medição incorreta.
- Eexx** Ocorreu um erro de calibração.
- Lo** Pilha fraca. Substitua as quatro pilhas ao mesmo tempo.

GARANTIA & PROTEÇÃO AMBIENTAL









Este aparelho é garantido 2 anos contra qualquer defeito material e de fabrico. Durante este período, os defeitos serão reparados gratuitamente (uma prova de compra deve ser apresentada se a balança estiver abrangida pela garantia). Esta garantia não cobre os danos resultando de acidentes, utilização incorrecta ou negligência. Se quiser apresentar uma reclamação, dirija-se em primeira instância à loja onde comprou o aparelho.



Equipamentos elétricos desativados não devem ser eliminados juntamente com os resíduos domésticos. Entregue num ponto de reciclagem existente. Consulte as autoridades locais ou o revendedor para obter informação sobre a reciclagem.

Safety Information

The below signs might be in the user manual, labeling or other components. They are the requirement of standard and using.

	Symbol for "THE OPERATION GUIDE MUST BE READ"		Symbol for "TYPE BF APPLIED PARTS"
CE 0123	Symbol for "COMPLIES WITH MDD93/42/EEC REQUIREMENTS"		Symbol for "ENVIRONMENT PROTECTION – Waste electrical products should not be disposed of with household waste. Please follow local guidelines"
	Symbol for "MANUFACTURER"		
SN	Symbol for "SERIAL NUMBER"		Symbol for "Authorised Representative in the European Community"
	For indoor use only		Symbol for "Class II Equipment"
	The Bluetooth Combination Mark	F1	T1A/250V Ø3.6*10CCC

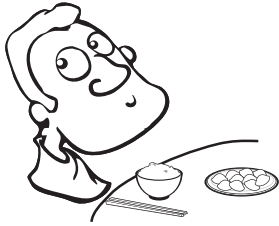


CAUTION

- * Please do read this user manual carefully and thoroughly before use.
- * This device is intended for adult use only.
- * This device is intended for non-invasive measuring and monitoring of arterial blood pressure. It is not intended for use on extremities other than the upper arm or for functions other than obtaining a blood pressure measurement.
- * Do not confuse self-monitoring with self-diagnosis. This unit allows you to monitor your blood pressure. Please start or end medical treatment basing solely on physician's treatment advice.
- * If you are taking medication, consult your physician to determine the most appropriate time for your measurement. Never change a prescribed medication without your physician's consent.
- * This unit is not suitable for continuous monitoring during medical emergencies or operations.
- * If the pressure of the cuff exceeds 40 kPa (300 mmHg), the unit will automatically deflate. Should the cuff not deflate when its pressure exceeds 40 kPa (300 mmHg), detach the cuff from the upper arm and press the homologous button to stop inflation.
- * Please do read this user manual carefully and thoroughly before use.
- * Do not use the monitor under the conditions of strong electromagnetic field (e.g. mobile) that radiates interference signal or electrical fast transient / burst signal, especially when the AC adaptor is applied.
- * Do not touch the output of AC adaptor and the patient simultaneously.
- * The device is not AP/APG equipment. It is not suitable for use in the presence of a flammable anesthetic mixture with air (or oxygen, nitrous oxide).
- * Please keep the unit out of reach of infants or children, since inhalation or swallowing of small parts is dangerous or even fatal.
- * Please use ACCESSORIES and detachable parts specified / authorised by MANUFACTURER. Otherwise, it may cause damage to the unit or danger to the user / patient.
- * The materials of the cuff have been tested and found to comply with requirements of ISO 10993-5: 2009 and ISO 10993-10:2010. It will not cause any potential allergic reaction or contact injury.
- * Please make sure the unit functions safely and it is in proper working conditions before use.

Tips for Measurement

It can cause inaccuracy if the measurement is taken in the following circumstances.



Within 1 hour
after dinner or drinking



Immediate measurement
after tea, coffe, smoking



Within 20 minutes
after taking a bath



When talking or moving
your fingers



In a very cold
environemnt

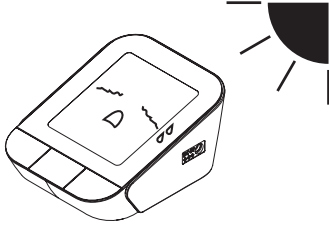


When you want
to discharge urine

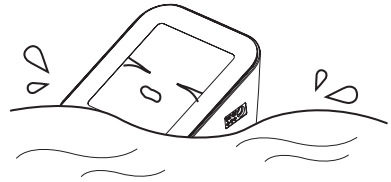


Maintenance

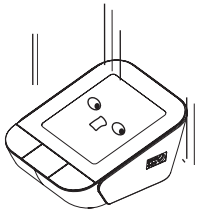
To obtain the best performance, please follow below instructions.



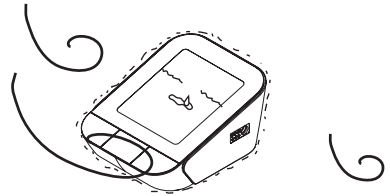
Put in a dry place
and avoid the sunshine



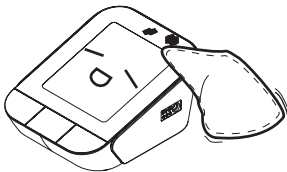
Avoid immersing it in the water.
Clean it with a dry cloth in case



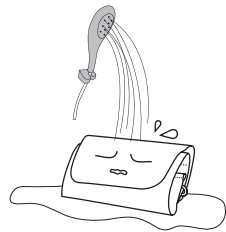
Avoid shaking and collision



Avoid dusty environment and
unstable temperature surrounding



Use the slightly damp cloth
to remove the dirt



Avoid washing the cuff

Cleaning: Before Use - Pick out the whole unit of the storage bag. Use the soft cloth to remove the dirt on the monitor and apply some alcohol to disinfect the cuff before tying the cuff.

After Use - Use the soft cloth to wipe the unit and apply some alcohol to disinfect the cuff before putting the whole unit back in the bag.

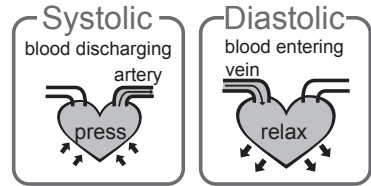
Please always disinfect the cuff before applying to another patient.

Please follow the instructions for correct replacement of interchangeable or detachable parts specified by SERVICE PERSONNEL of MANUFACTURER as "replaceable".

Disposal: Degraded sensors may result in inaccurate measurement while loosened electrodes may cause the monitor's failure to power on. The expected life of the monitor is two years. Please dispose of ACCESSORIES, detachable parts, and the ME EQUIPMENT according to the local guidelines.

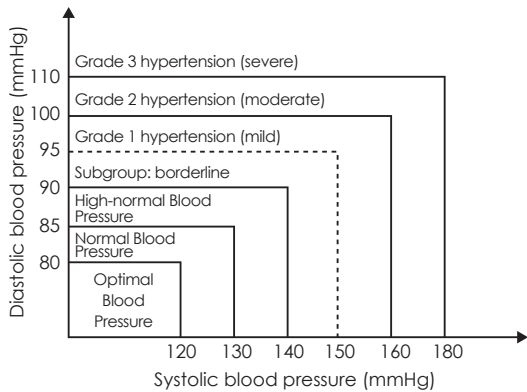
What are systolic pressure and diastolic pressure?

When ventricles contract and pump blood out of the heart, the blood pressure reaches its maximum value in the cycle, which is called systolic pressure. When the ventricles relax, the blood pressure reaches its minimum value in the cycle, which is called diastolic pressure.



What is the standard blood pressure classification?

The blood pressure classification published by World Health Organization (WHO) and International Society of Hypertension (ISH) in 1999 is as follows:



CAUTION

Only a physician can tell your normal BP range. Please contact a physician if your measuring result falls out of the range. Kindly note that only a physician could tell whether your blood pressure value has reached a dangerous point.

Level	Óptima	Normal	Normal-alta	Leve	Moderada	Grave
Blood Pressure (mm Hg)						
SYS	<120	120-129	130-139	140-159	160-179	≥180
DIA	<80	80-84	85-89	90-99	100-109	≥110

Irregular Heartbeat Detector

This Blood Pressure Monitor is equipped with an intelligent function of Irregular Heartbeat (IHB) Detector. During each measurement, this equipment records the heartbeat intervals and works out the standard deviation. If the calculated value is larger than or equal to 15, this equipment will light up the IHB symbol on the screen when displaying the measuring result.

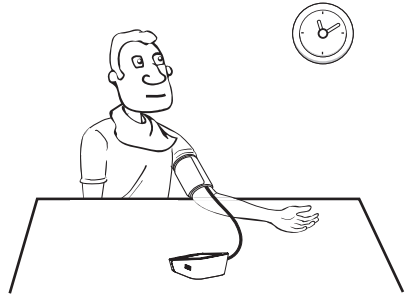


CAUTION

The appearance of the IHB icon indicates that a pulse irregularity consistent with an irregular heartbeat was detected during measurement. Usually this is NOT a cause for concern. However, if the symbol appears often, we recommend you seek medical advice. Please note that the device does not replace a cardiac examination, but serves to detect pulse irregularities at an early stage.

Why my blood pressure is varies even in one day?

1. Individual blood pressure varies every in one day, it also affected by the way you tie your cuff and the your measurement position, so please take the measurement at the same condition.
2. The varies of the pressure is greater if the person take medicine.
3. Waiting at least 4-5 minutes for another measurement.



Why the blood pressure I get from the hospital is different from home?

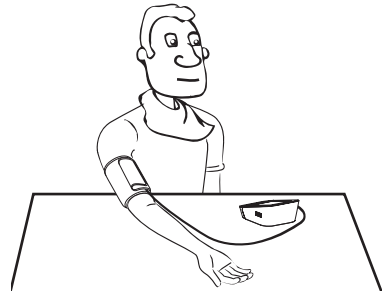
The blood pressure is different even during 24 hour because of the weather, emotion, exercise etc, specially the "white coat" in hospital which makes the results are higher than the ones at home.

The result is different that you measuring on the different arm.

It is ok for both arms, but there will be some different results for different arm, so suggest you measure the same arm every time.

The attention need to pay when you measure you blood pressure at home:

- If the cuff is tied properly.
- If the cuff is too tight or too loose.
- If the cuff is tied on the wrist.
- If you feel anxious pressured.
- You had better take deep breath 2-3 times before beginning.
- Advice: adjust yourself for 4-5 minutes until you calm down.



SPECIFICATIONS

Power supply	Battery powered mode: 6VDC 4*AA-size alkaline batteries AC adaptor powered mode: 100-240 V~, 50-60 Hz, 400 mA (Can be supplied by AC adaptor model UE08WCP-060100SPA only!)
Display mode	Digital LCD V.A. = 78mm x 92mm
Measurement mode	Oscillographic testing modev
Measurement range	Pressure: 0-40kpa(0~300mmHg) pulse value: (40-199)times/minute
Accuracy	Pressure: 5°C-40°C withi n±0.4kpa(3mmHg) pulse value: ±5%
Working condition	Temperature:5°C-40°C Relative Humidity ≤85%RH Atmospheric Pressure: 86-106 kPa
Storage & transportation condition	Temperature:-20°C-60°C Relative Humidity 10%-93%RH Atmospheric Pressure: 50-106 kPa
Measurement perimeter of the upper arm	About 22cm-42cm
Weight	Approx.385g(Excluding the dry cells)
External dimensions	Approx.120*160*69mm
Attachment	4*AA alkaline batteries,user manual
Mode of operation	Continuous operation
Degree of protection	Type BF applied part
Device Classification	Battery Powered Mode: Internally Powered ME Equipment AC Adaptor Powered Mode: Class II ME Equipment
IP Classification	IP22
Software Version	V01

WARNING: No modification of this equipment is allowed.

Complied European Standards List

Risk Management	EN/ISO 14971:2007
Labeling	EN 980:2008
User Manual	EN 1041:2008
General Requirements for Safety	EN 60601-1:2006/A1:2012 EN 62304:2006/AC:2008 EN 60601-1-6:2010 EN 60601-1-11:2010
Non-invasive Sphygmomanometers General Requirements	EN 1060-1:1995+A2:2009 EN 1060-3:1997+A2:2009 EN 1060-4:2004
Electromagnetic Compatibility	EN 60601-1-2:2007/AC:2010

EMC Guidance

Table 1 Guidance and manufacturer's declaration – electromagnetic emissions for all EQUIPMENT and SYSTEMS

Guidance and manufacture's declaration – electromagnetic emission		
The LS802-B is intended for use in the electromagnetic environment specified below. The customer of the user of the LS802-B should assure that it is used in such an environment		
Emission test	Compliance	Electromagnetic environment - guidance
RF emissions C ISPR 11	Group 1	The LS802-B uses RF energy only for its internal function. Therefore, its RF emissions are very low and are not likely to cause any interference in nearby electronic equipment.
RF emission CISPR 11	Class B	
Harmonic emissions IEC 61000-3-2	Not applicable	
Voltage fluctuations/ flicker emissions IEC 61000-3-3	Not applicable	The LS802-B is suitable for use in all establishments other than domestic and those directly connected to the public low-voltage power supply network that supplies buildings used for domestic purposes.

**Table 2 – Guidance and MANUFACTURER’S declaration – electromagnetic IMMUNITY –
for all ME EQUIPMENT and ME SYSTEMS**

Guidance and manufacturer’s declaration – electromagnetic immunity			
The device is intended for use in the electromagnetic environment specified below. The customer or the user of the device should assure that it is used in such an environment.			
IMMUNITY test	IEC 60601 test level	Compliance level	Electromagnetic environment – guidance
Electrostatic discharge (ESD) IEC 61000-4-2	± 6 kV contact ± 8 kV air	± 6 kV contact ± 8 kV air	Floors should be wood, concrete or ceramic tile. If floors are covered with synthetic material, the relative humidity should be at least 30 %.
Electrical fast transient/burst IEC 61000-4-4	± 2 kV for power supply lines ± 1 kV for input/output lines	± 2 kV for power supply lines	Mains power quality should be that of a typical commercial or hospital environment.
Surge IEC 61000-4-5	± 1 kV line(s) to line(s) ± 2 kV line(s) to earth	± 1 kV line(s) to line(s)	Mains power quality should be that of a typical commercial or hospital environment.
Voltage dips, short interruptions and voltage variations on power supply input lines IEC 61000-4-11	<5 % U_T (>95 % dip in U_T) for 0,5 cycle 40 % U_T (60 % dip in U_T) for 5 cycles 70 % U_T (30 % dip in U_T) for 25 cycles <5 % U_T (>95 % dip in U_T) for 5 s	<5 % U_T (>95 % dip in U_T) for 0,5 cycle 40 % U_T (60 % dip in U_T) for 5 cycles 70 % U_T (30 % dip in U_T) for 25 cycles <5 % U_T (>95 % dip in U_T) for 5 s	Mains power quality should be that of a typical commercial or hospital environment. If the user of the device requires continued operation during power mains interruptions, it is recommended that the device be powered from an uninterruptible power supply or a battery.
Power frequency (50/60 Hz) magnetic field IEC 61000-4-8	3 A/m	3 A/m	Power frequency magnetic fields should be at levels characteristic of a typical location in a typical commercial or hospital environment.
NOTE U_T is the a.c. mains voltage prior to application of the test level.			

Table 4 – Guidance and MANUFACTURER’S declaration – electromagnetic IMMUNITY – for ME EQUIPMENT and ME SYSTEMS that are not LIFE-SUPPORTING


Guidance and manufacturer’s declaration – electromagnetic immunity			
The device is intended for use in the electromagnetic environment specified below. The customer or the user of the device should assure that it is used in such an environment.			
IMMUNITY test	IEC 60601 TEST LEVEL	Compliance level	Electromagnetic environment – guidance
Conducted RF IEC 61000-4-6	3 Vrms 150 kHz to 80 MHz	3 Vrms	<p>Portable and mobile RF communications equipment should be used no closer to any part of the device, including cables, than the recommended separation distance calculated from the equation applicable to the frequency of the transmitter.</p> <p>Recommended separation distance</p> $d = 1.167 \sqrt{P}$
Radiated RF IEC 61000-4-3	3 V/m 80 MHz to 2,5 GHz	3 V/m	$d = 1.167 \sqrt{P} \quad 80 \text{ MHz to } 800 \text{ MHz}$ $d = 2.333 \sqrt{P} \quad 800 \text{ MHz to } 2,5 \text{ GHz}$ <p>where P is the maximum output power rating of the transmitter in watts (W) according to the transmitter manufacturer and d is the recommended separation distance in metres (m).</p> <p>Field strengths from fixed RF transmitters, as determined by an electromagnetic site survey,^a should be less than the compliance level in each frequency range.^b</p> <p>Interference may occur in the vicinity of equipment marked with the following symbol:</p> 
NOTE 1 At 80 MHz and 800 MHz, the higher frequency range applies.			
NOTE 2 These guidelines may not apply in all situations. Electromagnetic propagation is affected by absorption and reflection from structures, objects and people.			
<p>a Field strengths from fixed transmitters, such as base stations for radio (cellular/cordless) telephones and land mobile radios, amateur radio, AM and FM radio broadcast and TV broadcast cannot be predicted theoretically with accuracy. To assess the electromagnetic environment due to fixed RF transmitters, an electromagnetic site survey should be considered. If the measured field strength in the location in which the device is used exceeds the applicable RF compliance level above, the device should be observed to verify normal operation. If abnormal performance is observed, additional measures may be necessary, such as re-orienting or relocating the device.</p> <p>b Over the frequency range 150 kHz to 80 MHz, field strengths should be less than 3 V/m.</p>			

Table 6 – Recommended separation distances between portable and mobile RF communications equipment and the ME EQUIPMENT or ME SYSTEM – for ME EQUIPMENT and ME SYSTEMS that are not LIFE-SUPPORTING

Recommended separation distances between portable and mobile RF communications equipment and the device			
The device is intended for use in an electromagnetic environment in which radiated RF disturbances are controlled. The customer or the user of the device can help prevent electromagnetic interference by maintaining a minimum distance between portable and mobile RF communications equipment (transmitters) and the device as recommended below, according to the maximum output power of the communications equipment.			
Rated maximum output power of transmitter W	Separation distance according to frequency of transmitter m		
	150 kHz to 80 MHz $d = 1.167 \sqrt{P}$	80 MHz to 800 MHz $d = 1.167 \sqrt{P}$	800 MHz to 2,5 GHz $d = 2.333 \sqrt{P}$
0,01	0.117	0.117	0.233
0,1	0.369	0.369	0.738
1	1.167	1.167	2.333
10	3.690	3.690	7.378
100	11.67	11.67	23.33
For transmitters rated at a maximum output power not listed above, the recommended separation distance <i>d</i> in metres (m) can be estimated using the equation applicable to the frequency of the transmitter, where <i>P</i> is the maximum output power rating of the transmitter in watts (W) according to the transmitter manufacturer.			
NOTE 1 At 80 MHz and 800 MHz, the separation distance for the higher frequency range applies.			
NOTE 2 These guidelines may not apply in all situations. Electromagnetic propagation is affected by absorption and reflection from structures, objects and people.			



GUANGDONG TRANSTEK MEDICAL ELECTRONICS CO., LTD
 Zone A, No.105 ,Dongli Road, Torch Development District,
 Zhongshan,528437,Guangdong,China



MDSS - Medical Device Safety Service GmbH
 Schiffgraben 41, 30175 Hannover, Germany

Terraillon SAS France & Headquarters

1, rue Ernest Gouin
78290 Croissy-sur-Seine - France
Service Consommateurs : 0 826 88 1789
serviceconsommateurs@terraillon.fr

Service Après Vente

SAV TERRAILLON chez GEFCO
ZA La Porte des Champs
Bâtiment A
95470 SURVILLIERS

Terraillon UK Ltd

2 The Waterhouse
Waterhouse Street - Hemel Hempstead
Herts HP1 1ES - UK
Tel: +44 (0)1442 270444 - sales@terraillon.co.uk

Terraillon Asia Pacific Ltd

4/F, Eastern Centre
1065 King's Road
Quarry Bay - Hong Kong
Tel: + 852 (0)2960 7200
customerservice@terraillon-asia.com

Terraillon Corp USA

contact@terraillon.fr

Terraillon®

www.terraillon.com